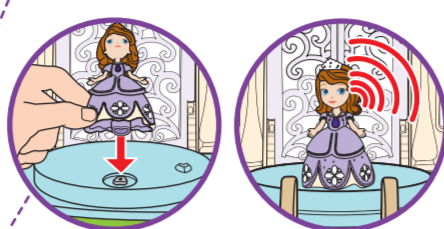
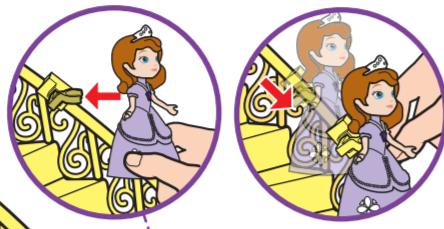


Hide-and-seek with Clover the Rabbit!



Toy goes to sleep mode after few minutes of inactivity. Press button to wake up toy. Yellow light will flash to indicate toy is awake.



Slide down stairs!



Reveals picnic area!

Hold Sofia, Clover the Rabbit, and other compatible dolls and figures (not included) on the platform for a few seconds to hear talking feature or sound.

IMPORTANT: For best performance, keep toy away from direct sunlight during play.

Q: Why do two sides of the balcony keep falling off?

A: Check if the two sides are connected properly to the platform. Each side of the platform has its own distinct connections and will only fit its designated piece.

Q: Where should I place the stairs? I can't find the place to connect it.

A: The tab on the stairs should be inserted into the slot on the second floor, clip the stairs onto the castle as shown.

Q: Why can't I flip the bed over?

A: Clover the Rabbit might have fallen off, lift bed up and reattach Clover.

Q: Why are there no sounds or phrases when I place the dolls on the platform?

A: You can try doing the following:

- The toy might be in sleep mode. Press the button on platform to reactivate it, a yellow light will flash to indicate it's awake.
- Check if the doll is correctly placed over the reader on the platform.
- Turn the platform over, see if the power has been switched on.
- Install new batteries.

BATTERY INSTALLATION

BATTERY SAFETY INFORMATION

In exceptional circumstances batteries may leak fluids that can cause a chemical burn injury or ruin your product. To avoid battery leakage:

- Rechargeable batteries are not to be recharged.
- Rechargeable batteries are to be removed from the product before being charged.
- Exhausted batteries are to be removed from the product.
- The supply terminals are not to be short-circuited.
- Dispose of batteries safely.
- Do not mix old and new batteries.
- Only batteries of the same or equivalent type as recommended are to be used.
- Batteries are to be inserted with the correct polarity.
- Exhausted batteries are to be removed from the product.
- The supply terminals are not to be short-circuited.
- Dispose of batteries safely.
- Do not dispose of this product in a fire. The batteries inside may explode or leak.

For product sold in USA

This device complies with Part 15 of the FCC Rules. Operation is subject to the following two conditions:

- This device may not cause harmful interference, and
- this device must accept any interference received, including interference that may cause undesired operation.

For product sold in Canada • Pour les produits vendus au Canada

This Class B Digital Apparatus complies with Canadian ICES-005. CET APPAREIL NUMÉRIQUE DE LA CLASSE B EST CONFORME À LA NORME NMB-005 DU CANADA.

(VALID FOR CANADA ONLY • VALABLE AU CANADA SEULEMENT)

Operation is subject to the following two conditions:

- this device may not cause interference, and
- this device must accept any interference, including interference that may cause undesired operation of the device.

Utilisation de ce dispositif est autorisée seulement aux conditions suivantes:

- il ne doit pas produire de brouillage et
- il doit accepter toute brouillage radioélectrique reçu, même si ce brouillage est susceptible de compromettre son fonctionnement.

CONSUMER INFORMATION

Need Assistance? Visit service.mattel.com or call 1-800-526-6897 (US and Canada only).

SERVICE.MATTEL.COM



Magical Talking Castle INSTRUCTIONS



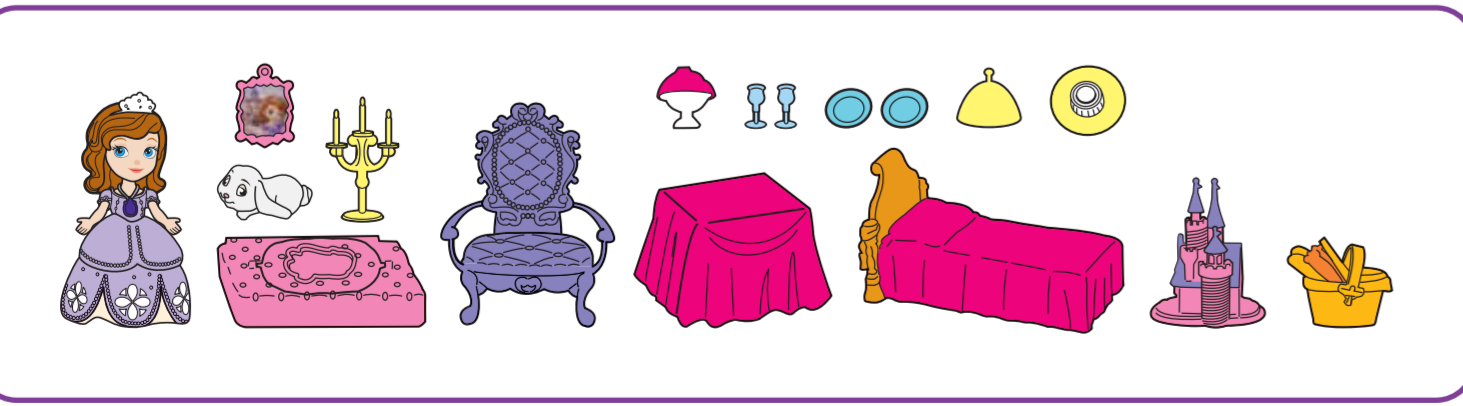
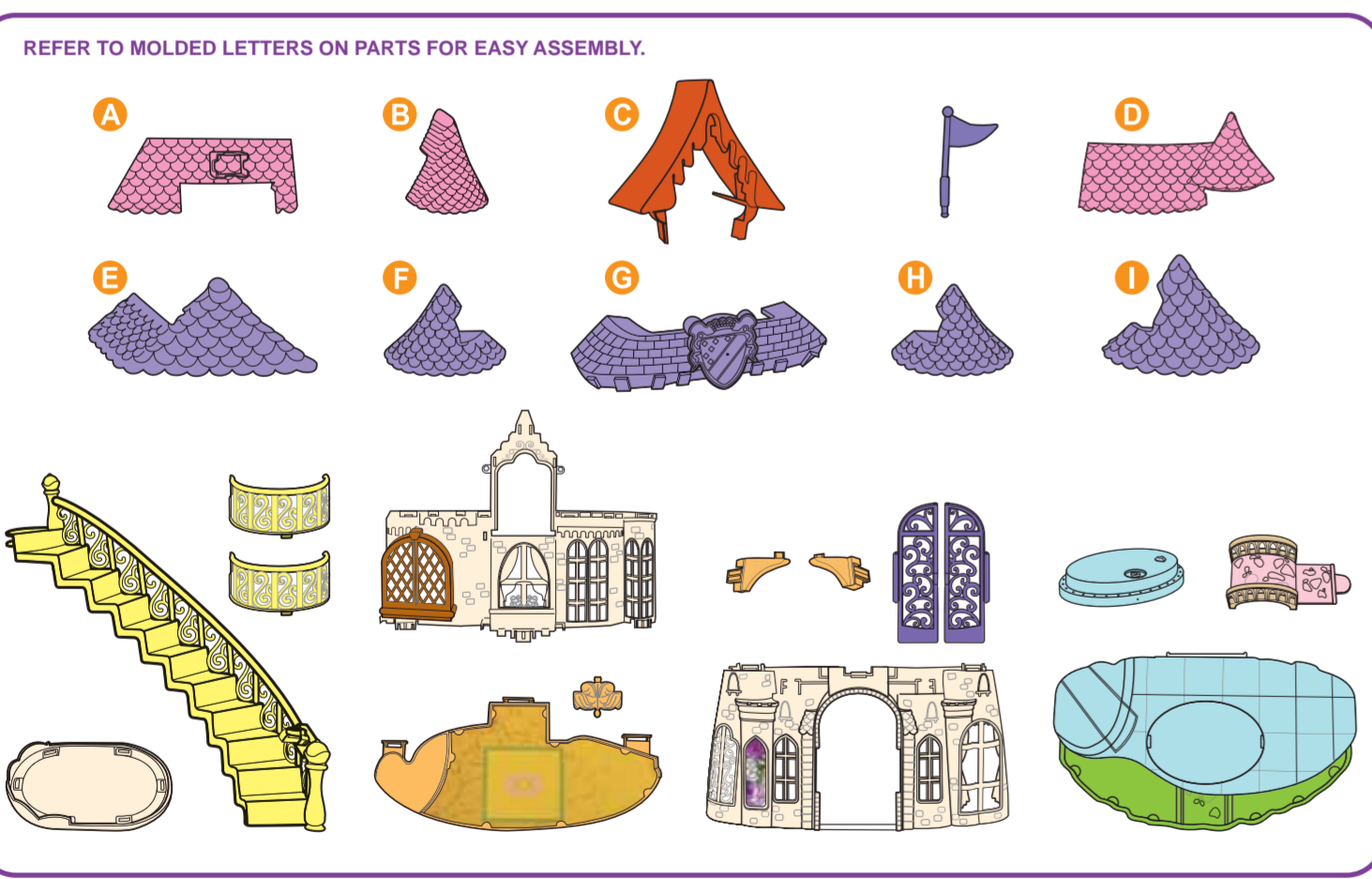
3+

©2013 Mattel. All Rights Reserved.

CONTENTS

(Total 42 pieces)

Please remove everything from the package and compare to the contents shown here. Colors and decorations may vary. If any items are missing, please contact your local Mattel office. Keep these instructions for future reference as they contain important information.



1

ASSEMBLY: CASTLE

1

2

3

4

2

TURRETS

REFER TO MOLDED LETTERS ON PARTS FOR EASY ASSEMBLY.

3

BALCONY & STAIRS

